

NOTES FOR DESIGNERS:

This template provides an approximate representation of how the final product will appear so that you may arrange your artwork accordingly. It is not required that you use this template but it can be helpful in determining placement of logos, etc. Clipping masks are included so that you can easily insert your designs. Please provide vector artwork so that we can scale it to the right size and make edits. If you zoom-in to your art and see square pixels, it is not vector. Also make sure that all text is expanded and images are embedded instead of linked.

If your design contains photo-realistic elements then non-vector artwork can be used. In this case the artist needs to design at a minimum of 150dpi, and TO-SCALE for best results. For example, a shirt front is typically 35" tall, so the art for the shirt front should be TO-SCALE = 35" tall. Non-vector files are often very large, so feel free to use this template as a mockup and send us the full-size files separately.

PRODUCT DETAILS:

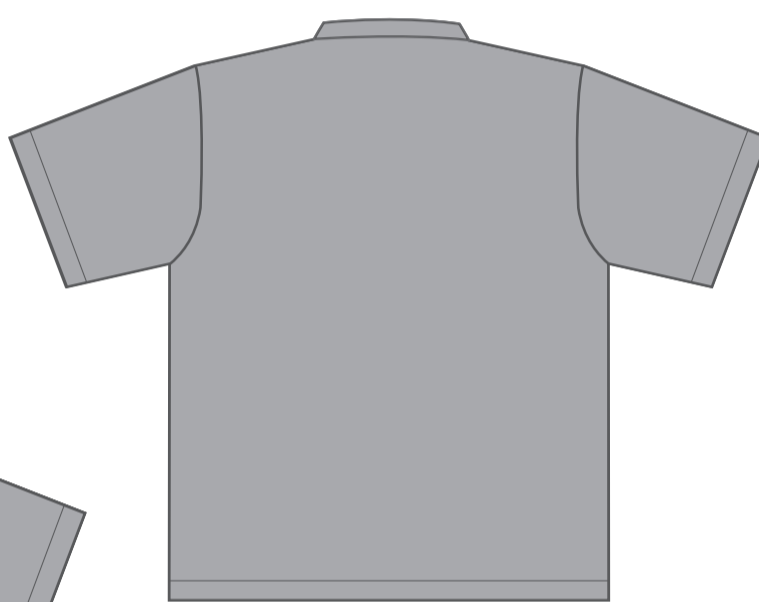
- Classic Quarter-Zip Polo (MCDP01)
- Classic Quarter-Zip Longsleeve Polo (MCDP01L)
- Womens Quarter-Zip Polo (LCIP01)
- Womens Quarter-Zip Longsleeve Polo (LCIP01L)
- Youth Quarter-Zip Polo (YCDP01)
- Youth Quarter-Zip Longsleeve Polo (YCDP01L)

- Full (fold-over) collar or Half (stand - up) collar
- Covered or Exposed zipper
- Short or Long Set-in Sleeves
- Athletic Smooth Fabric (#15A): Moisture wicking polyester, 50+ UV protected with smooth finish.
- Add-ons: chest pocket(s), epaulettes, split hem.

Front (full collar)



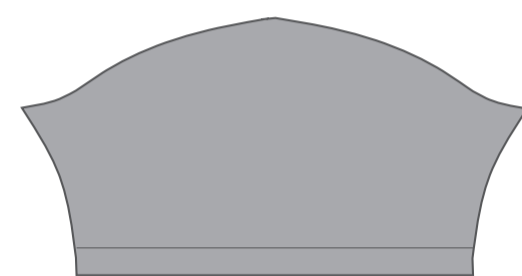
Back



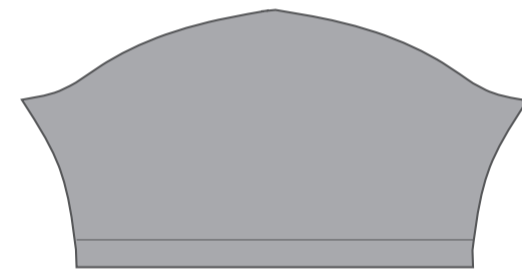
Front (half collar)



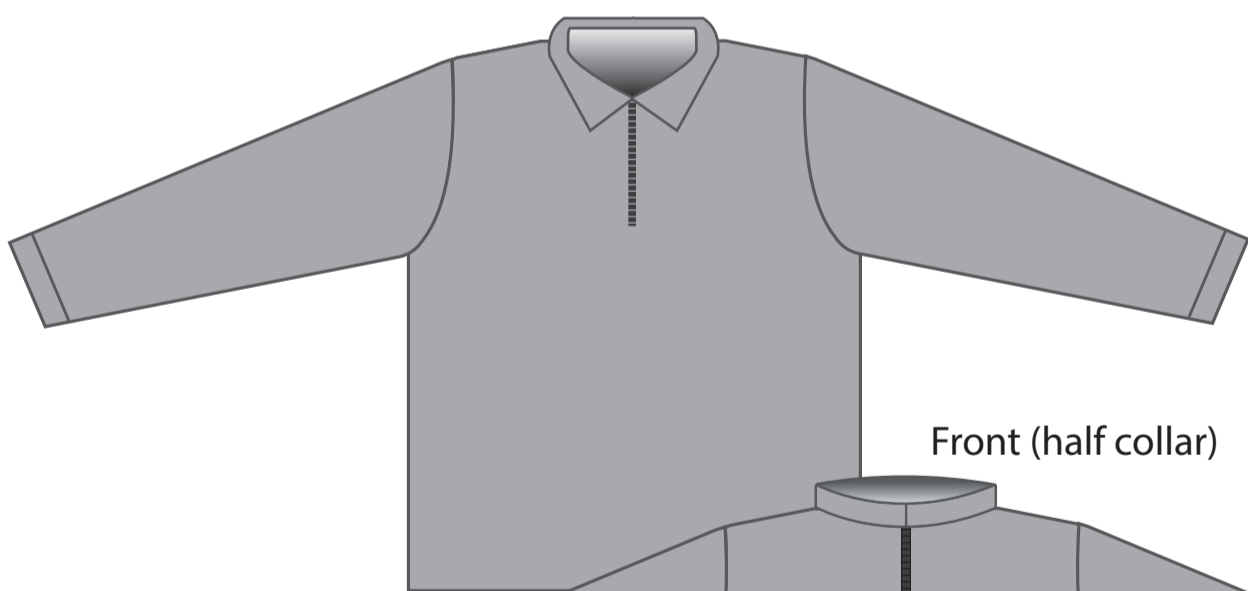
Right Sleeve



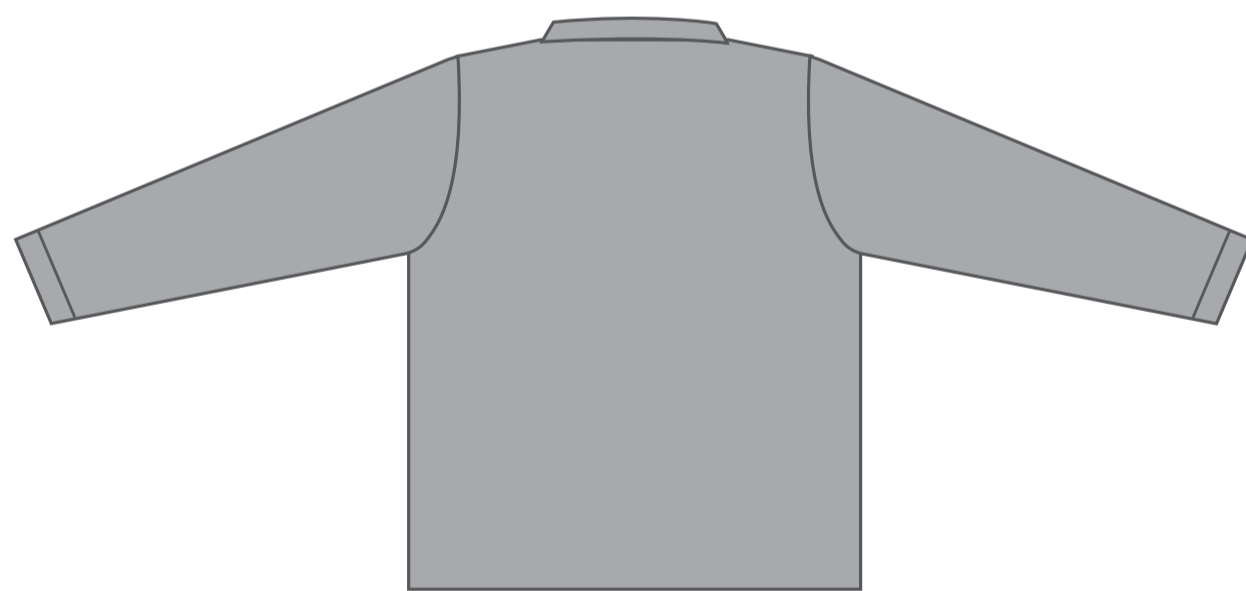
Left Sleeve



Front



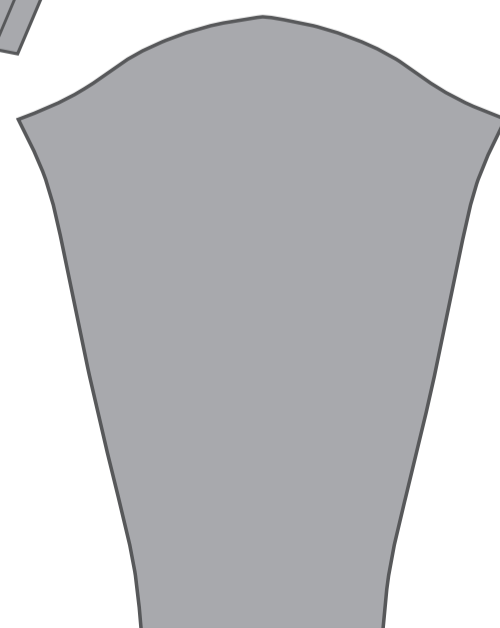
Back



Front (half collar)



Right Sleeve



Left Sleeve

