

NOTES FOR DESIGNERS:

This template provides an approximate representation of how the final product will appear so that you may arrange your artwork accordingly. It is not required that you use this template but it can be helpful in determining placement of logos, etc. Clipping masks are included so that you can easily insert your designs. Please provide vector artwork so that we can scale it to the right size and make edits. If you zoom-in to your art and see square pixels, it is not vector. Also make sure that all text is expanded and images are embedded instead of linked.

If your design contains photo-realistic elements then non-vector artwork can be used. In this case the artist needs to design at a minimum of 150dpi, and TO-SCALE for best results. For example, a shirt front is typically 35" tall, so the art for the shirt front should be TO-SCALE = 35" tall. Non-vector files are often very large, so feel free to use this template as a mockup and send us the full-size files separately.

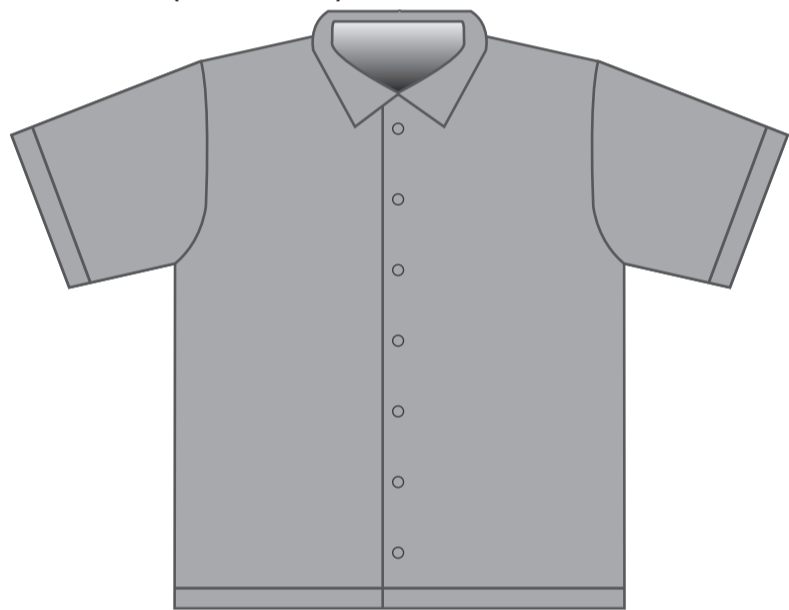
PRODUCT DETAILS:

Button Down Short Sleeve Sport Shirt (MCDP02)
 Button Down Long Sleeve Sport Shirt (MCDP02L)

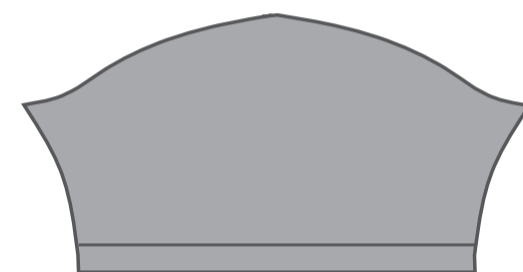
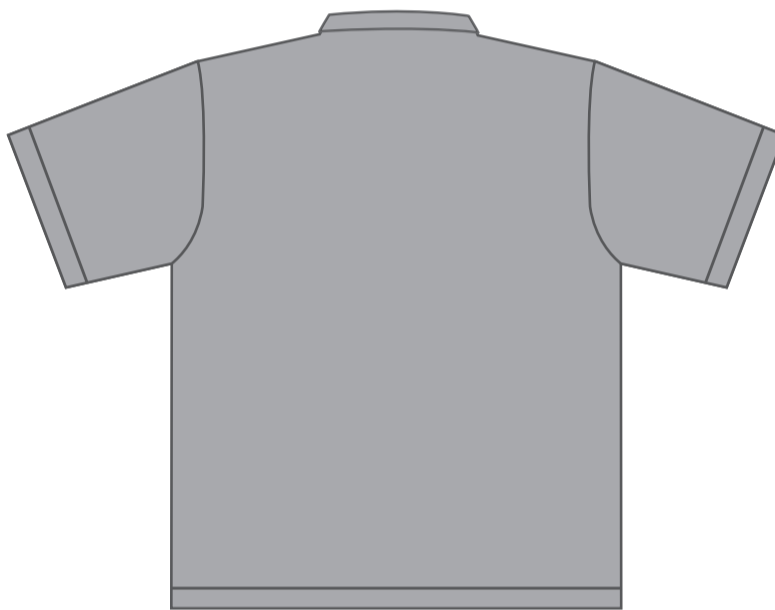
Full (fold-over) collar
 Full Button Down Front with Black or White Buttons
 Short or Long Set-in Sleeves
Athletic Smooth Fabric (#15A): Moisture wicking polyester, 50+ UV protected with smooth finish.

Add-ons: chest pocket(s), epaulettes.

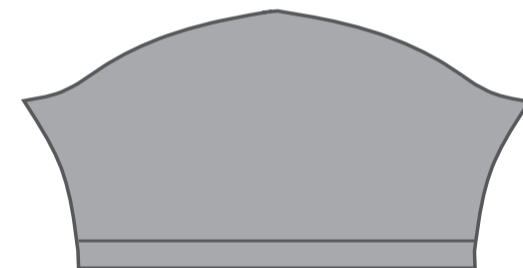
Front (full collar)



Back

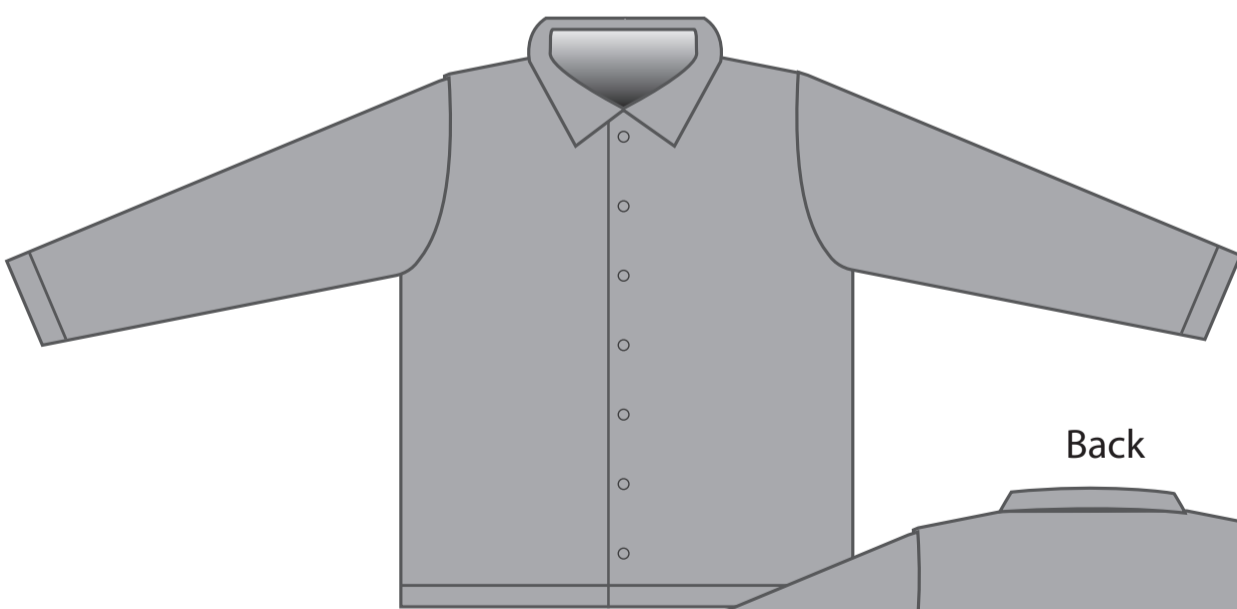


Right Sleeve

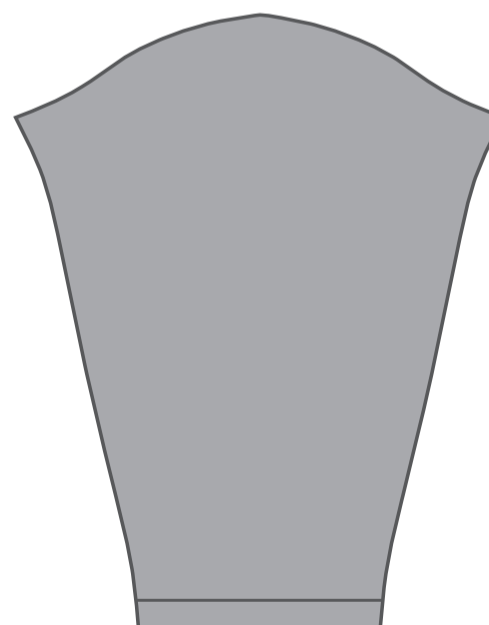


Left Sleeve

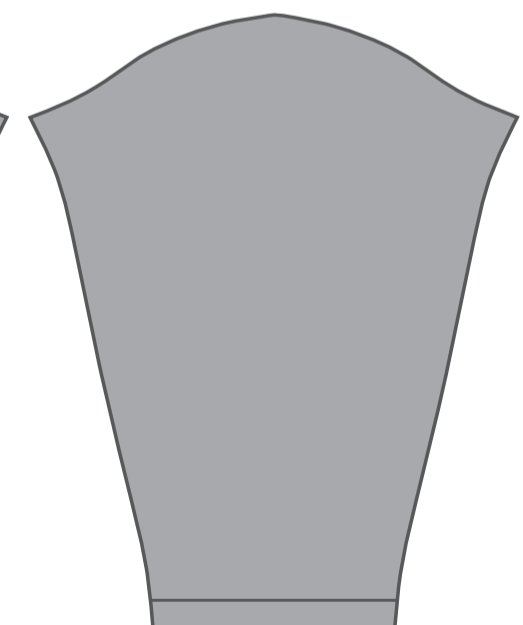
Front (full collar)



Back



Right Sleeve



Left Sleeve